

# EXPO CHICAGO

19 - 22 SEPTEMBER 2019

BOOTH #267

MILES

McENERY

GALLERY

# EXPO CHGO

**BOOTH #267**

19 - 22 SEPTEMBER 2019

CHICAGO, IL

**TOMORY DODGE**

**INKA ESSENHIGH**

**BEVERLY FISHMAN**

**WARREN ISENSEE**

**RAFFI KALENDERIAN**

**PATRICK LEE**

**MARKUS LINNENBRINK**

**RYAN McGINNESS**

**MICHAEL REAFSNYDER**

**DANIEL RICH**

**JOHN SONSINI**

**PATRICK WILSON**

MILES

McENERY

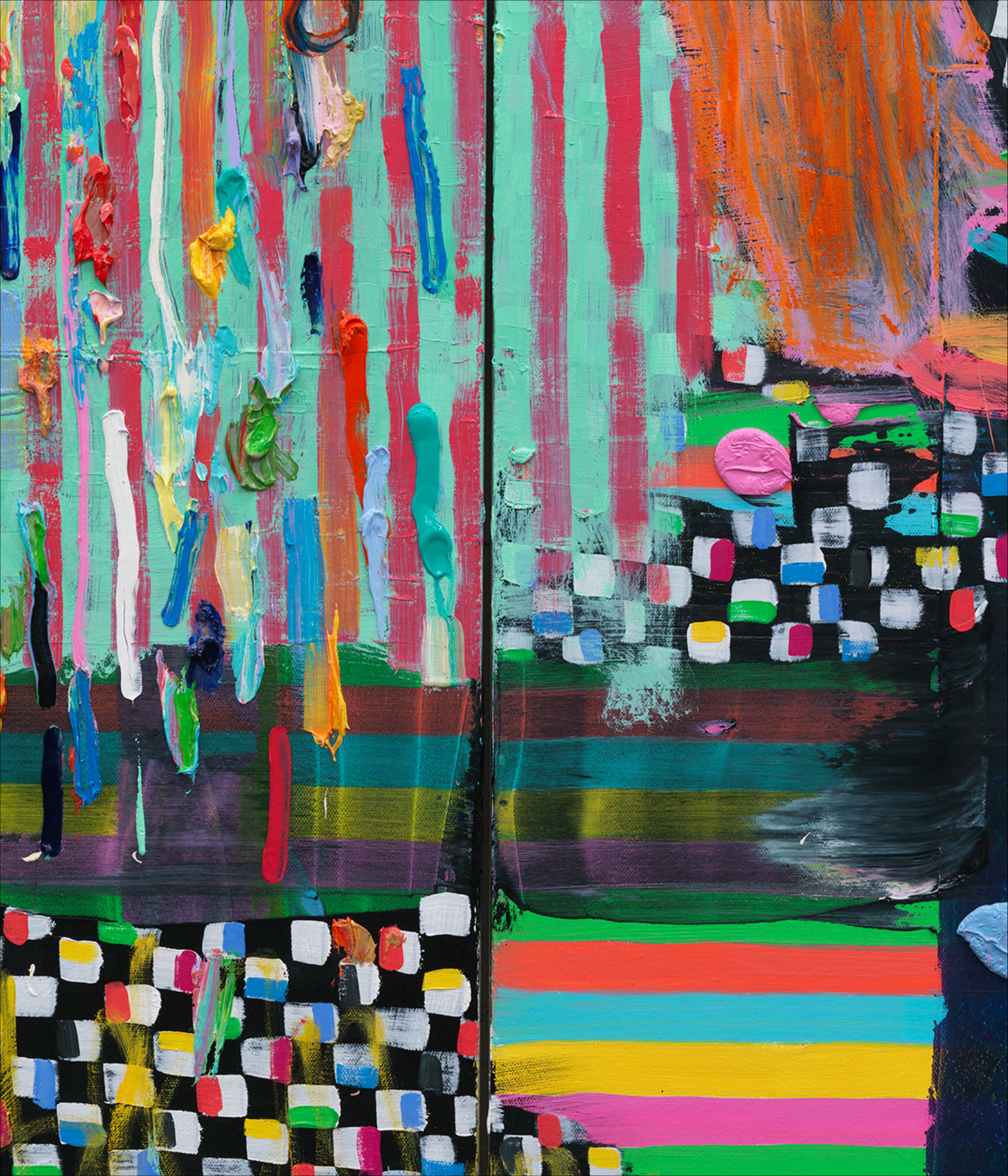
GALLERY

520 West 21st Street  
New York NY 10011

tel +1 212 445 0051  
[www.milesmcenery.com](http://www.milesmcenery.com)

525 West 22nd Street  
New York NY 10011





TOMORY DODGE



**TOMORY DODGE**  
*Goodbye Dragonfly*, 2019  
Oil on canvas  
84 x 144 inches  
213.4 x 365.8 cm







**INKA ESSENHIGH**



**INKA ESSENHIGH**  
***Snowflake (Pink)***, 2009  
Oil on canvas  
64 x 72 inches  
162.6 x 182.9 cm







BEVERLY FISHMAN



**BEVERLY FISHMAN**  
*Untitled (Sleepiness, Epilepsy)*, 2019  
Urethane paint on wood  
60 x 44 x 3 inches  
152.4 x 111.8 x 7.6 cm







WARREN ISENSEE



WARREN ISENSEE

*Untitled*, 2019  
Colored pencil on paper  
6 5/8 x 7 inches  
16.8 x 17.8 cm

*Inner Outer*, 2018  
Colored pencil on paper  
6 1/2 x 7 inches  
16.5 x 17.8 cm

*Untitled*, 2018  
Colored pencil on paper  
6 1/2 x 7 inches  
16.5 x 17.8 cm

*Untitled*, 2019  
Colored pencil on paper  
6 5/8 x 7 inches  
16.8 x 17.8 cm

*Untitled*, 2018  
Colored pencil on paper  
6 1/2 x 7 inches  
16.5 x 17.8 cm

*Untitled*, 2018  
Colored pencil and graphite on paper  
6 1/2 x 7 inches  
16.5 x 17.8 cm







RAFFI KALENDERIAN



**RAFFI KALENDERIAN**

*Lauren*, 2019

Oil on canvas

70 x 98 inches

177.8 x 248.92 cm





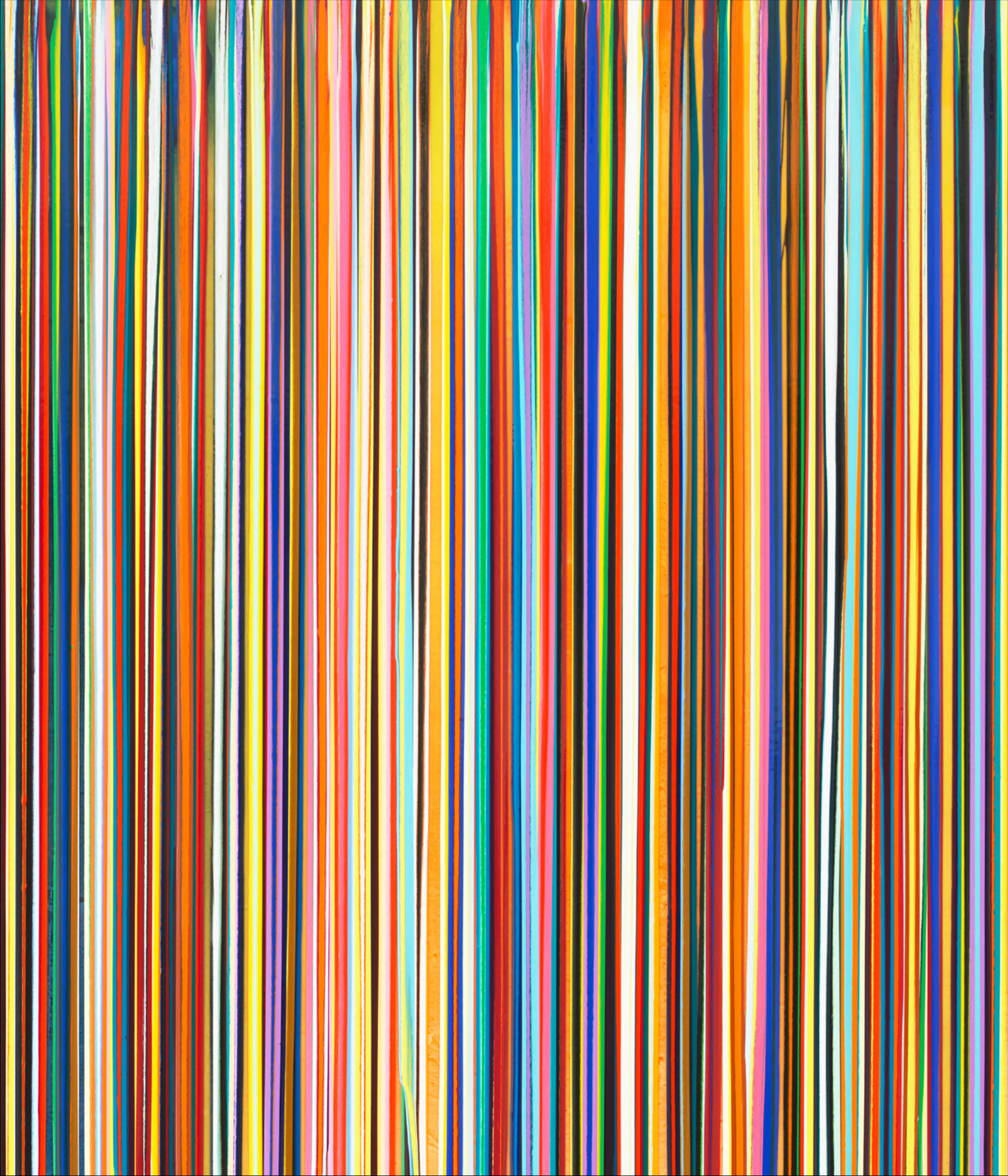
**PATRICK LEE**



**PATRICK LEE**  
***Cry Baby***, 2019  
Graphite on paper  
24 x 18 inches  
61 x 45.7 cm







MARKUS LINNENBRINK



**MARKUS LINNENBRINK**  
***NEONEYEDDAD***, 2019  
Epoxy resin and pigments on wood  
72 x 72 inches  
182.9 x 182.9 cm







RYAN McGINNESS



**RYAN McGINNESS**  
*Script Kitties*, 2016  
Acrylic on wood panel  
69 1/2 x 51 1/8 inches  
176.5 x 129.9 cm







MICHAEL REAFSNYDER



MICHAEL REAFSNYDER

*Mix Master*, 2019

Acrylic on linen

52 x 60 inches

132.1 x 152.4 cm







DANIEL RICH



DANIEL RICH  
*Shenzhen*, 2018  
Acrylic on Dibond  
60 x 60 inches  
152.4 x 152.4 cm







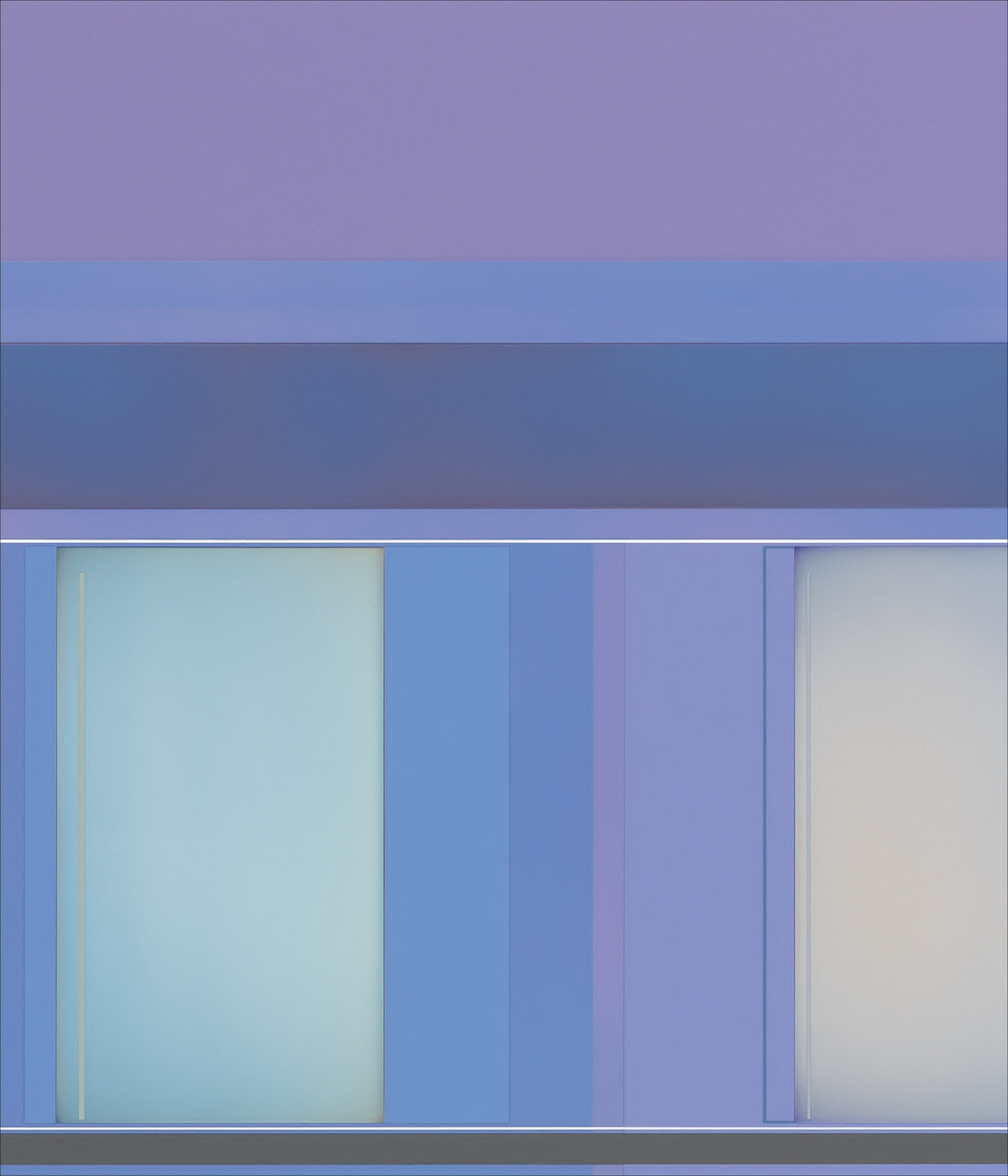
JOHN SONSINI



**JOHN SONSINI**  
*Miguel Antonio*, 2018  
Oil on canvas  
72 x 48 inches  
182.9 x 121.9 cm



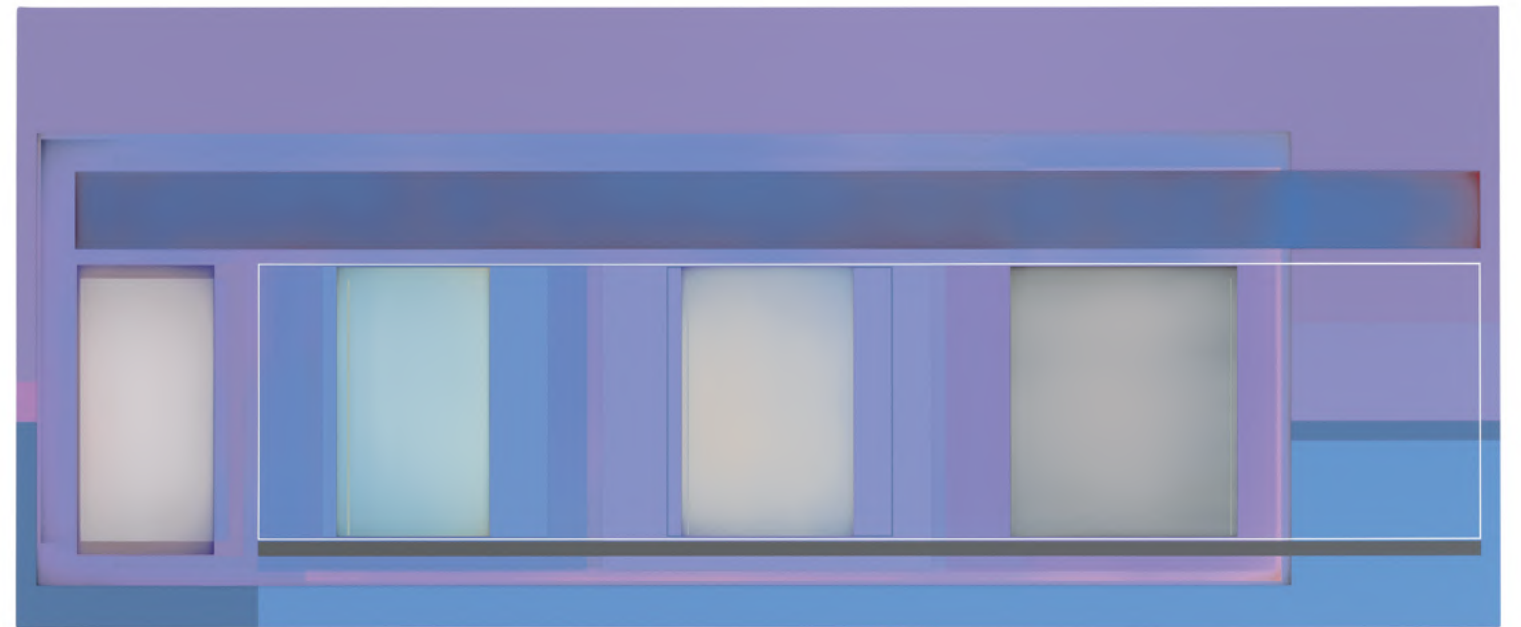




**PATRICK WILSON**



**PATRICK WILSON**  
*Helen's Place*, 2019  
Acrylic on canvas  
30 x 72 inches  
76.2 x 182.9 cm





Published on the occasion of



**BOOTH #267**

19 - 22 September 2019  
Chicago, IL

Miles McEnergy Gallery

520 West 21st Street  
New York, NY 10011

525 West 22nd Street  
New York NY 10011

tel +1 212 445 0051  
[www.milesmcenergy.com](http://www.milesmcenergy.com)

Publication © 2019 Miles McEnergy Gallery  
All rights reserved

Photography by  
Christopher Burke Studio, New York, NY  
Farzad Owrang, New York, NY

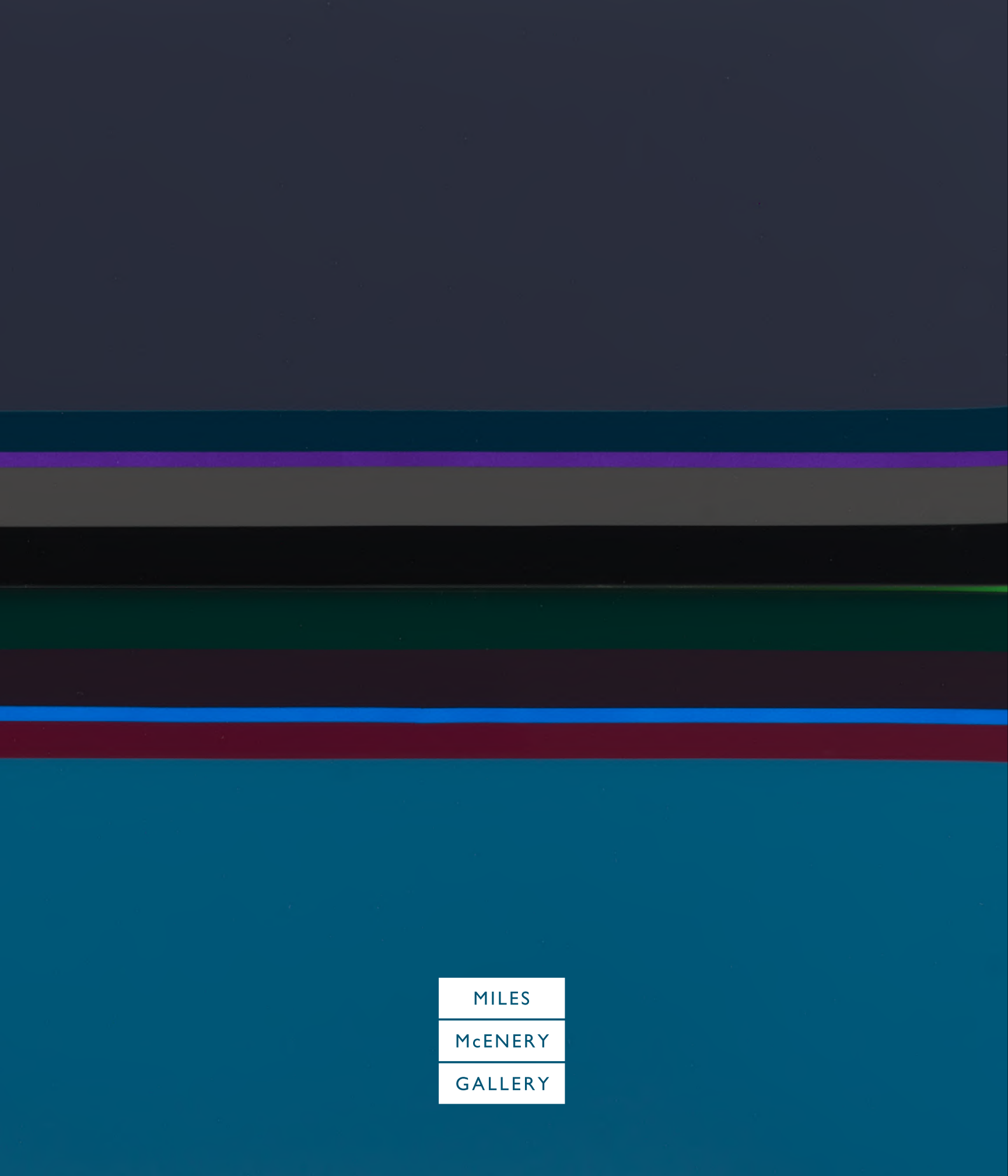
Cover: Beverly Fishman, [*Untitled (Sleepiness, Epilepsy)*] (detail), 2019, Urethane paint on wood,  
60 x 44 x 3 inches, 152.4 x 111.8 x 7.6 cm

MILES

McENERY

GALLERY





MILES

McENERY

GALLERY