



EXPO CHGO

11-14 APRIL 2024

NAVY PIER | CHICAGO



EXPO CHGO

11 - 14 APRIL 2024
NAVY YARD | CHICAGO
BOOTH #339

MILES
McENERY
GALLERY

WOLF KAHN

“Looking back over sixty-five years of Kahn’s artistic production, it is possible to see an ongoing combination of responsiveness to visual perception and a fundamental adherence to the language of abstraction. His pursuit of a synthesis of the two is fueled in part by the attraction of paradox, as he expresses it. Deliberately, he will leave a work verging on the edge of dissolution into its components, so the viewer tends to see an abstraction and a perceived landscape simultaneously. The resulting tension lifts his paintings beyond a routine simulacrum of an observed subject. This complexity may well play a role in the ongoing positive response to the dynamic of Kahn’s work, evident in the number of exhibitions he has had, the number of awards he has been given, the extensive representation of his work in museum collections, and the many books and catalogs devoted to his landscape paintings and pastels. The significance of his contribution to the panorama of contemporary American art lies in the way his works preserve certain values of modernism, pay homage to the nature that surrounds us, embody the highest level of painterly performance, and take cognizance of changing ways of thinking about and producing art, while not letting go of what has gone before.”

- Martica Sawin

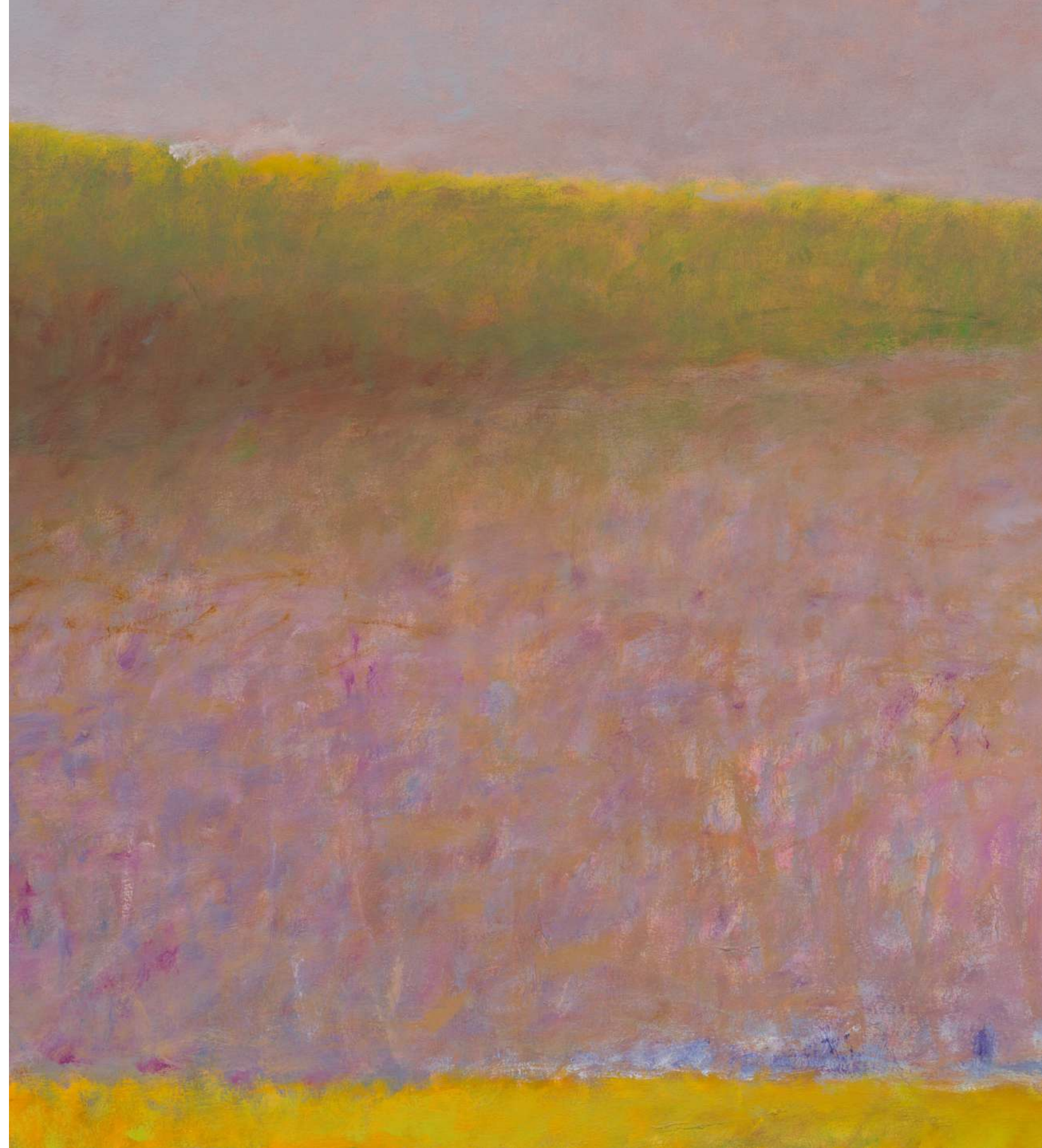
Wolf Kahn regularly exhibited at galleries and museums across North America. His work may be found in the collections of The Metropolitan Museum of Art, New York, NY; the Whitney Museum of American Art, New York, NY; The Museum of Modern Art, New York, NY; the Museum of Fine Arts, Boston, MA; The Hirshhorn Museum and the Smithsonian American Art Museum, Washington, D.C.; and the Los Angeles County Museum of Art, Los Angeles, CA.

Kahn died in 2020 in New York, at the age of 92.



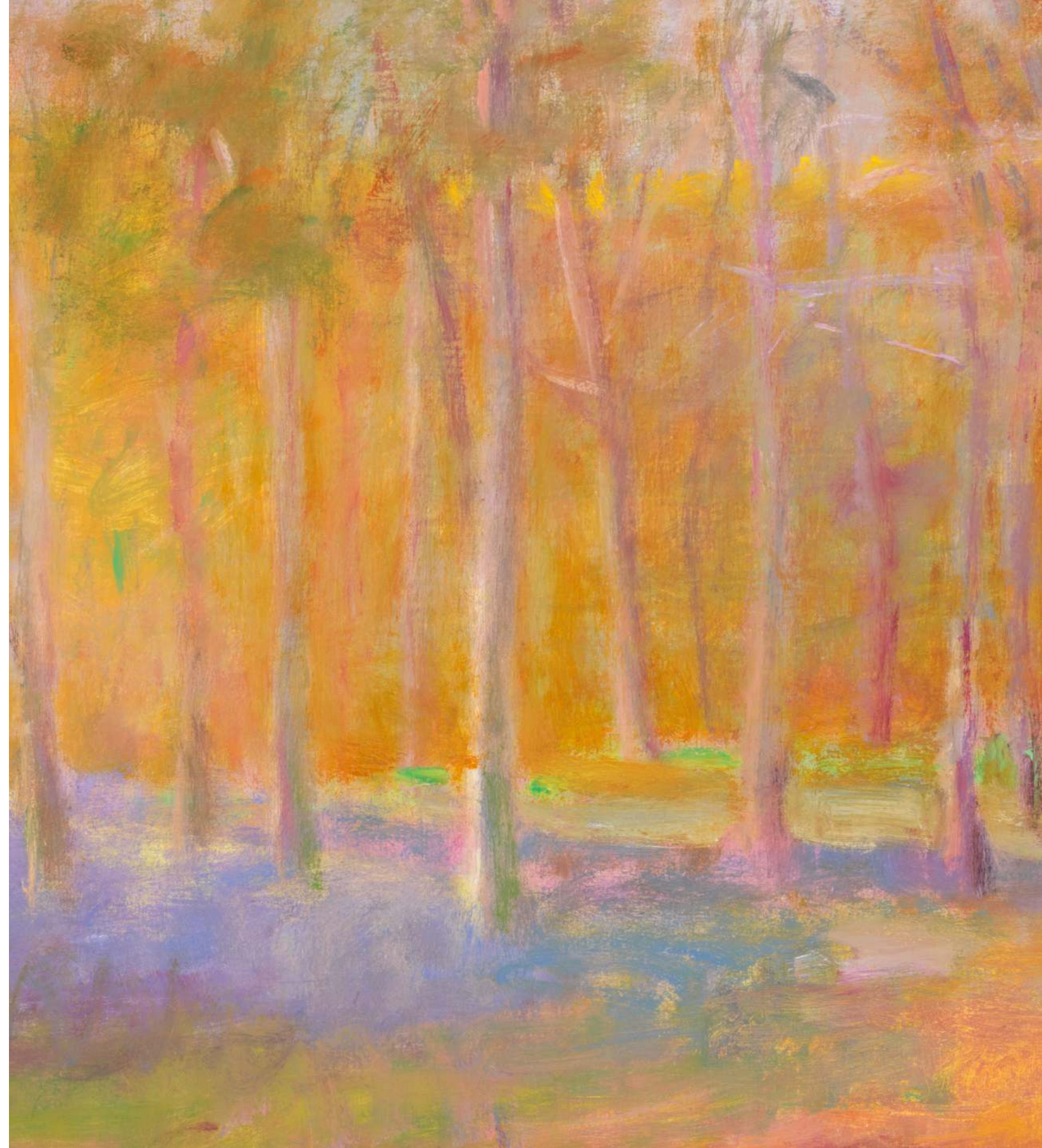


WOLF KAHN
Shadows on South Pond, 1987
Oil on canvas
44 x 60 inches
111.8 x 152.4 cm





WOLF KAHN
Path Through a Copse, 1990
Oil on canvas
20 x 30 inches
50.8 x 76.2 cm



MILES McENERY GALLERY



WOLF KAHN
Two Barns, 1999
Oil on canvas
42 x 52 inches
106.7 x 132.1 cm





WOLF KAHN
How Low the Mighty Have Fallen II, 2002
Oil on canvas
42 x 66 inches
106.7 x 167.6 cm





WOLF KAHN
Dark Hill in the Distance, 2005
Oil on canvas
22 x 24 inches
55.9 x 61 cm



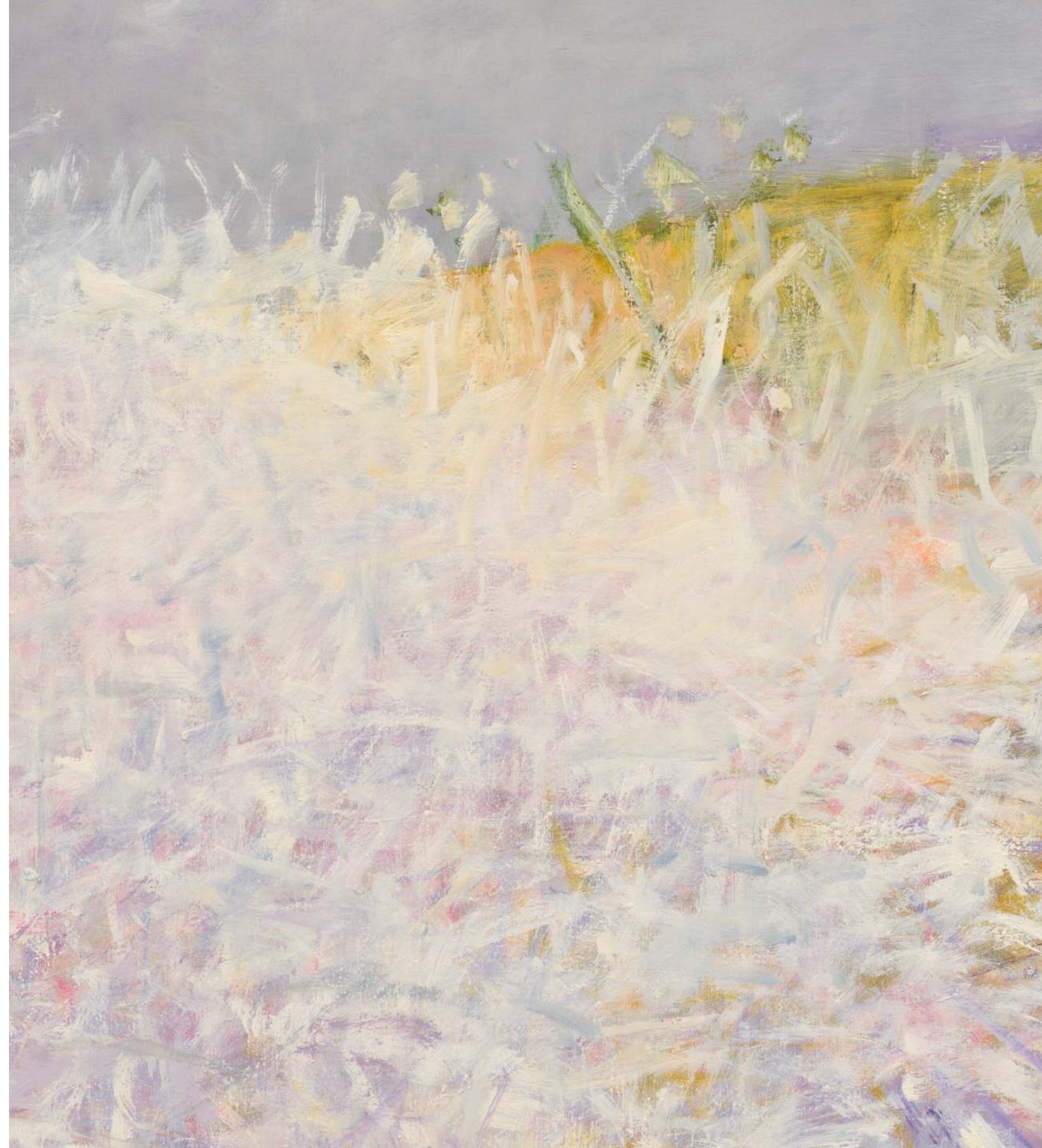


WOLF KAHN
House in a Haze, 2005
Oil on canvas
42 x 52 inches
106.7 x 132.1 cm





WOLF KAHN
Tangle with a Pink Tinge, 2006
Oil on canvas
36 x 42 inches
91.4 x 106.7 cm



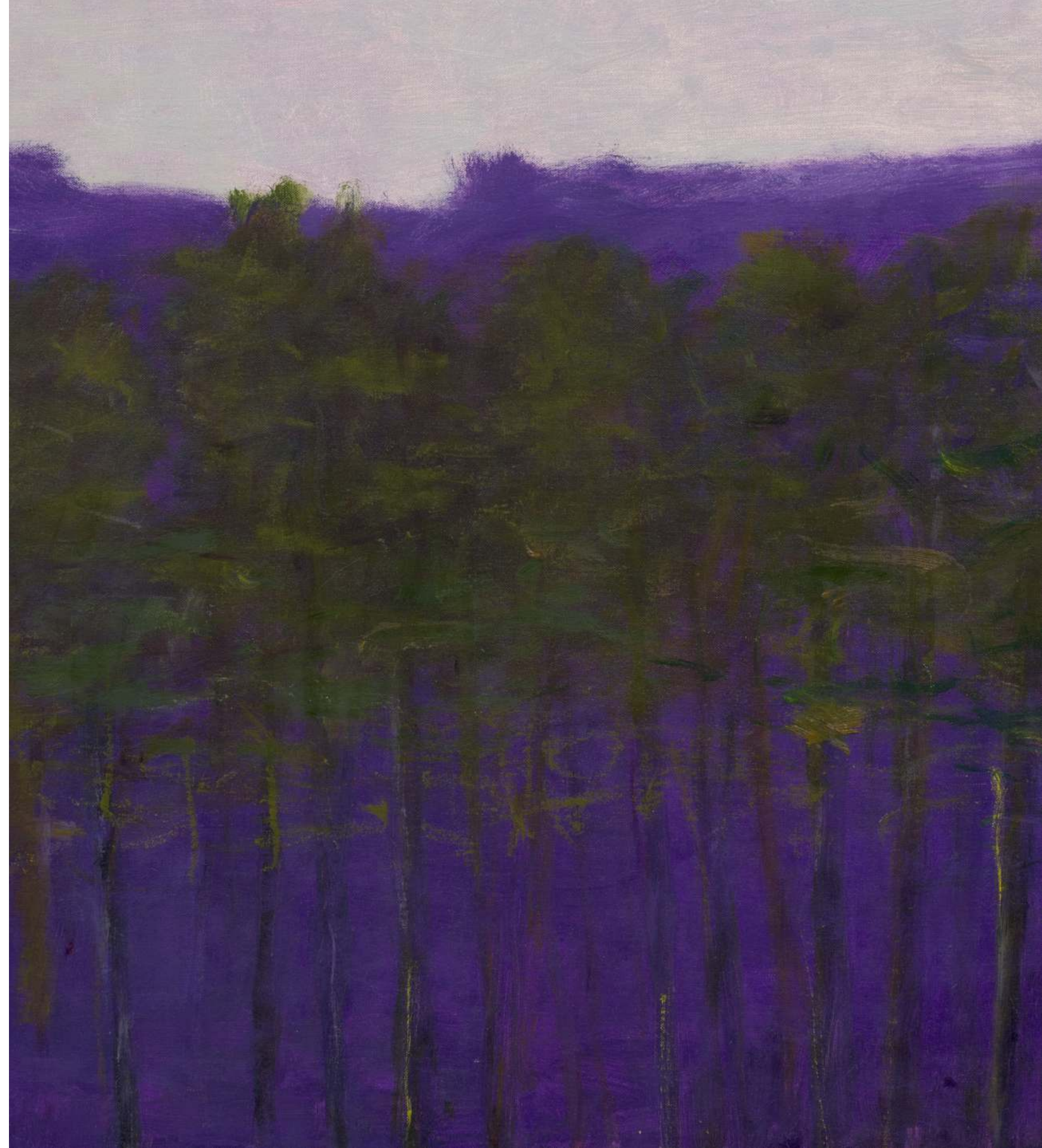


WOLF KAHN
Pale Pink, Charged with Energy, 2009
Oil on canvas
22 x 28 inches
55.9 x 71.1 cm



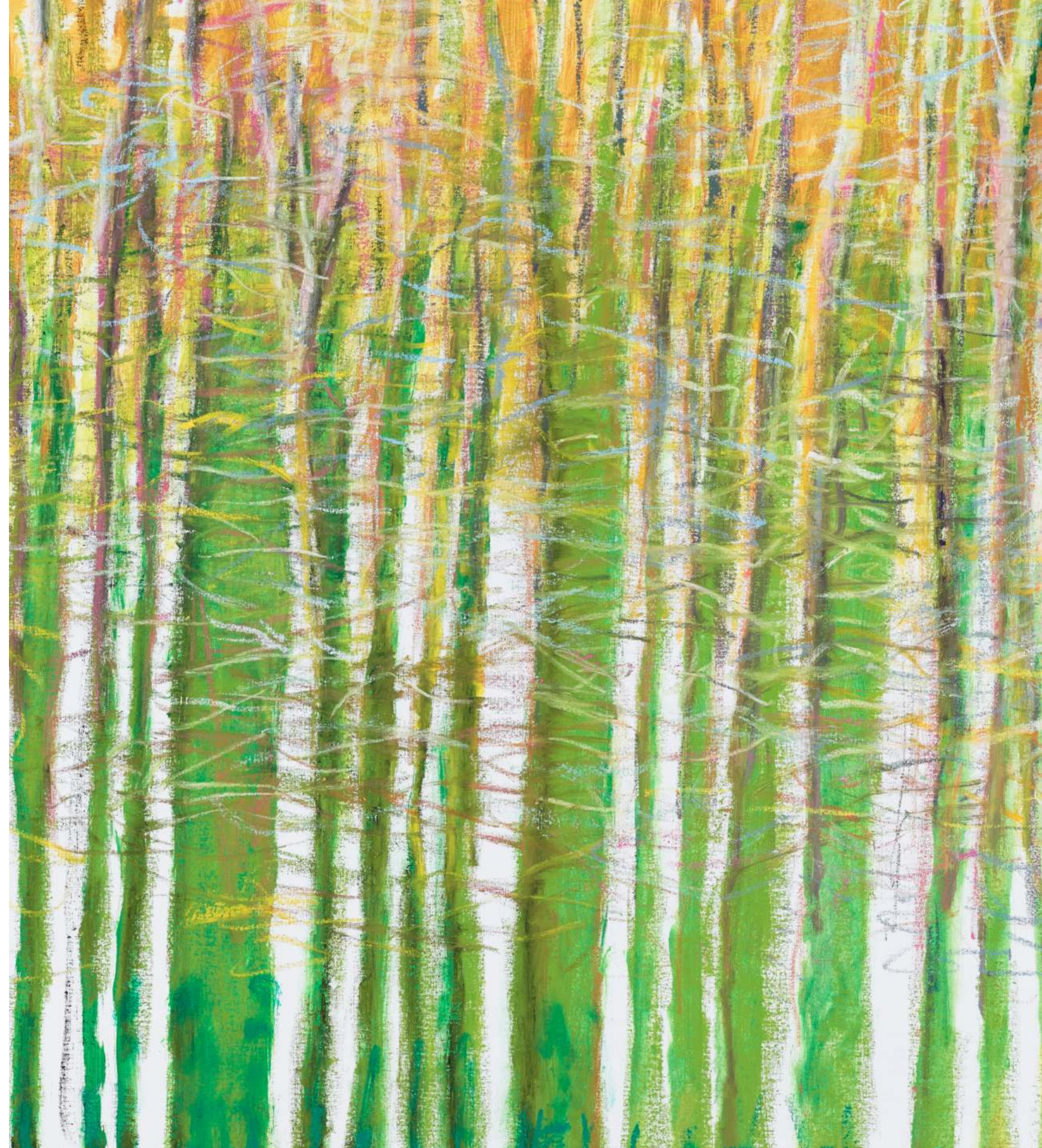


WOLF KAHN
Deep Purple, Deep Green, 2010
Oil on canvas
30 x 48 inches
76.2 x 121.9 cm



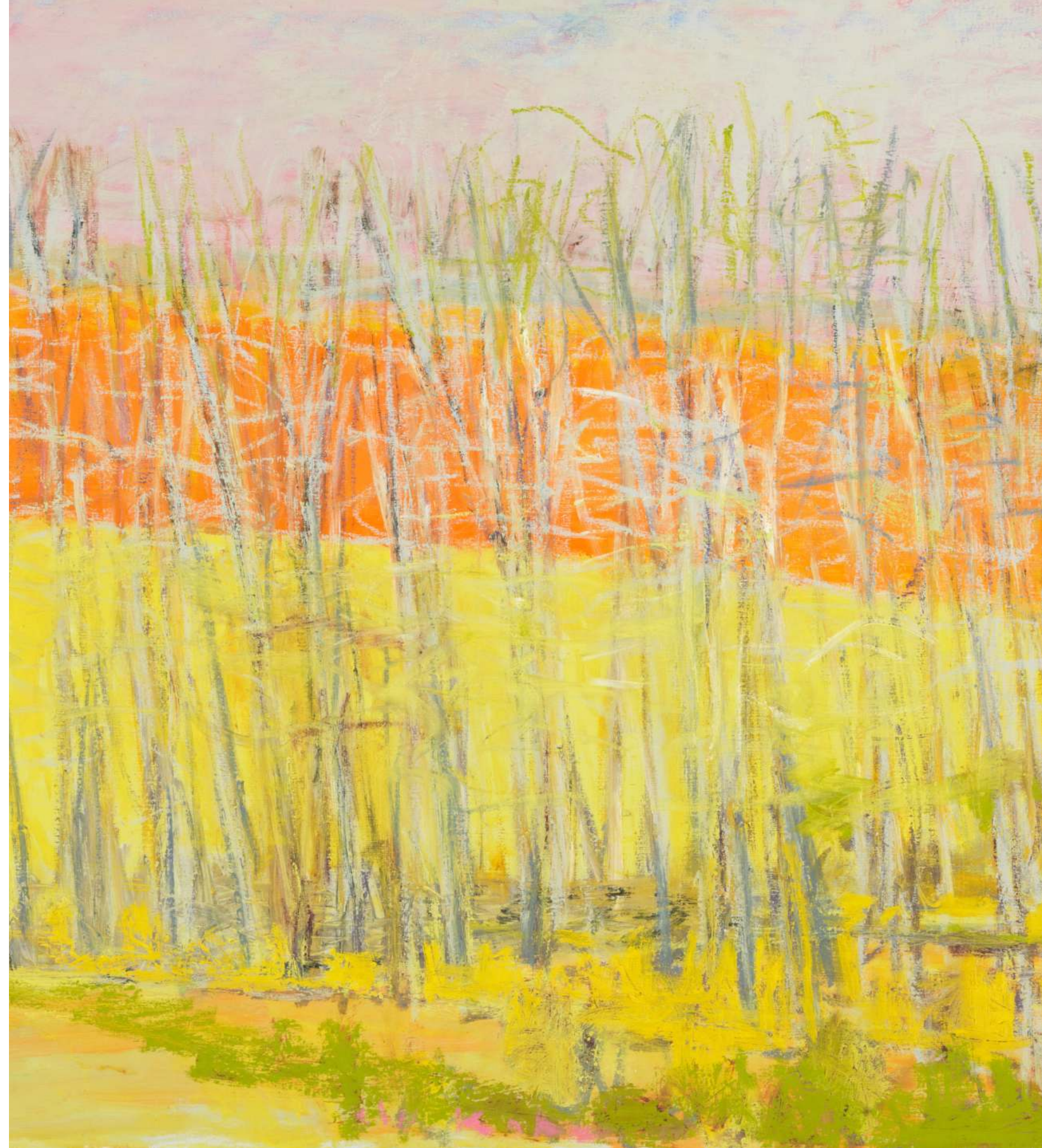


WOLF KAHN
Large Tree Parade, 2013
Oil on canvas
64 x 90 inches
162.6 x 228.6 cm



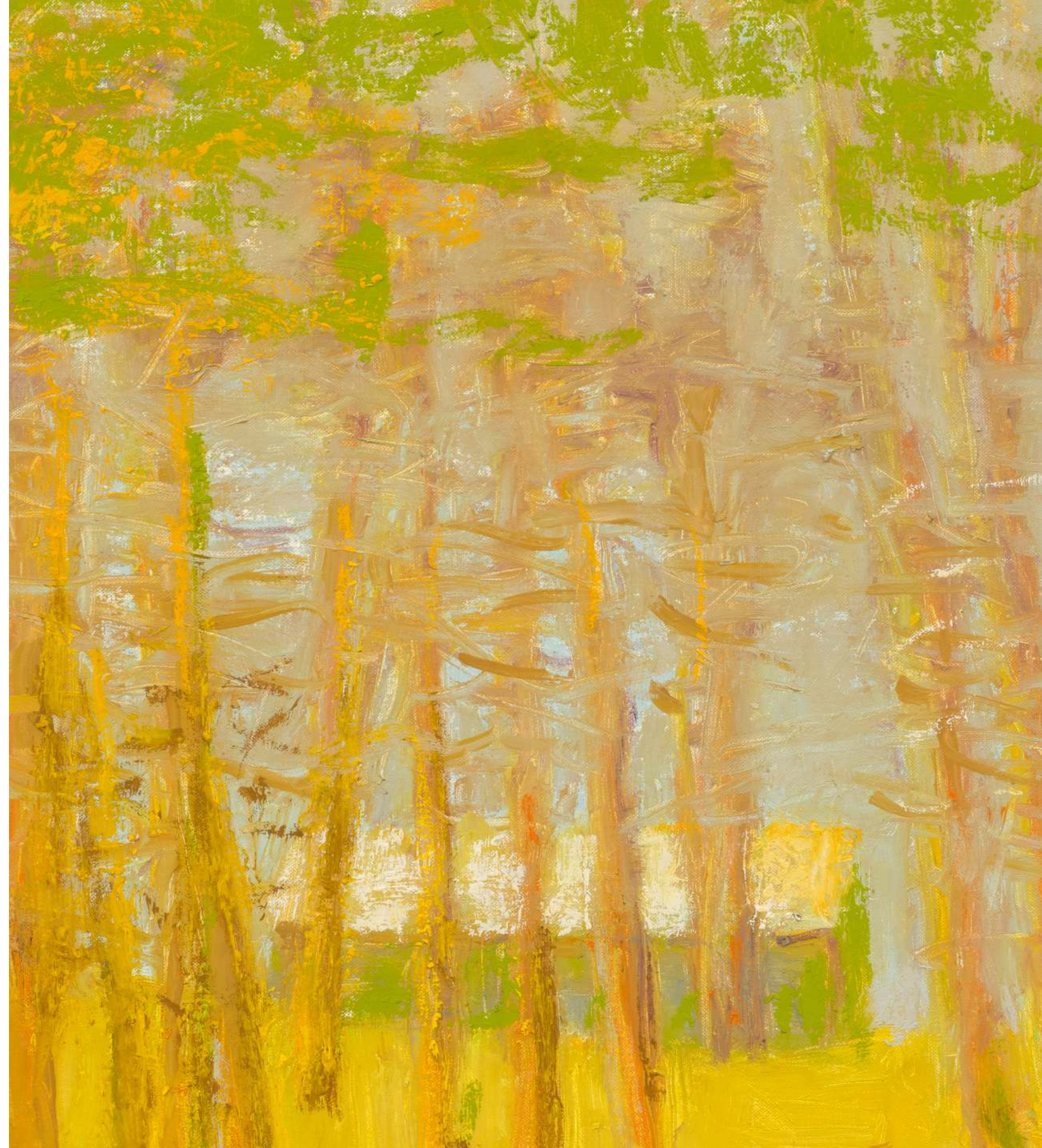


WOLF KAHN
Translucent, 2013
Oil on canvas
30 x 52 inches
76.2 x 132.1 cm





WOLF KAHN
Orange Diagonal, 2016
Oil on canvas
36 x 40 inches
91.4 x 101.6 cm





MILES

McENERY

GALLERY